

SVITZER

Oliver Burke – Technical Superintendent Immingham

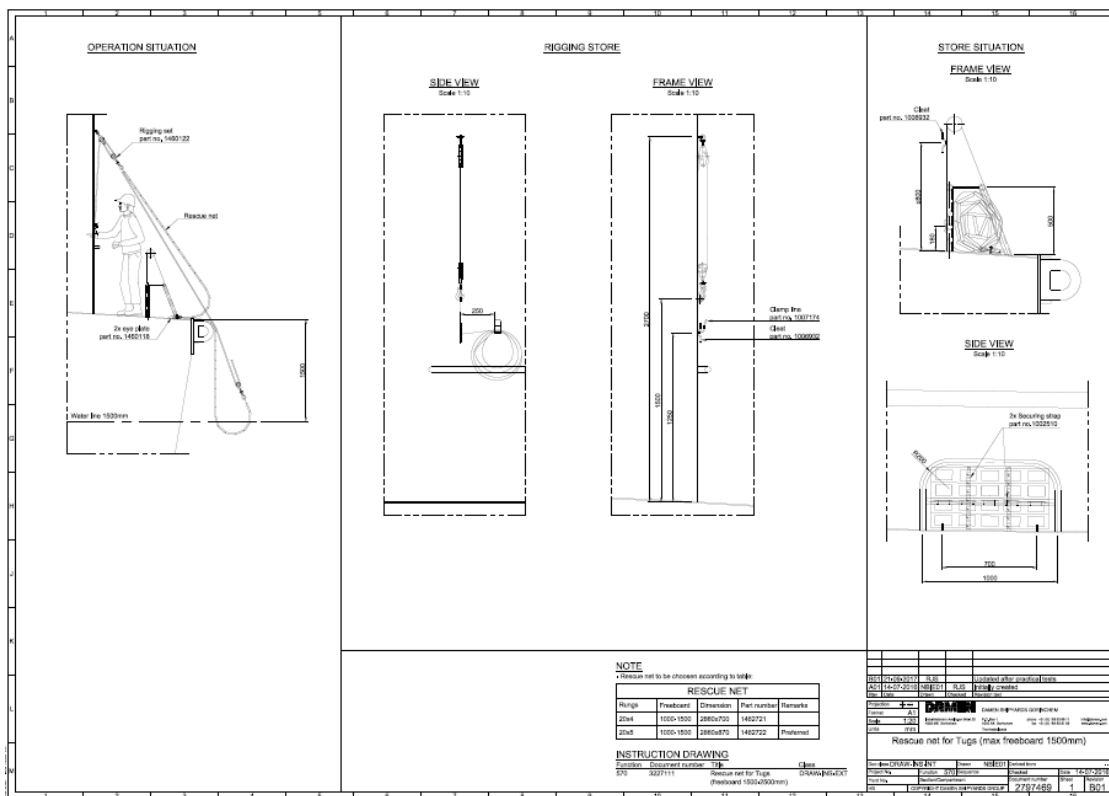
THE OB RAIL DEVELOPMENT JOURNEY



31/10/22

THE NEED

SVITZER ELEANOR (INNOVATION) DAMEN RSD 2513



USE OF A PORTABLE DEVICE

WAS IT THE RIGHT TOOL FOR THE JOB???

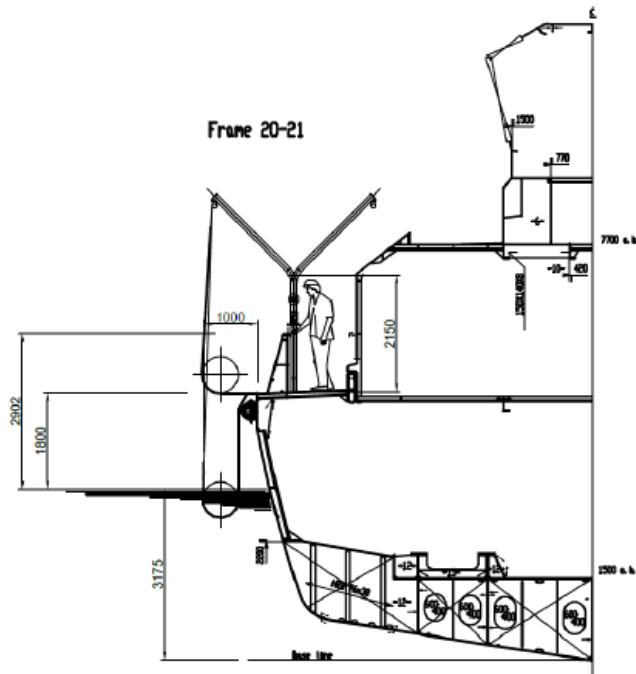


Pic 1: Winch: Broken upper Jaw

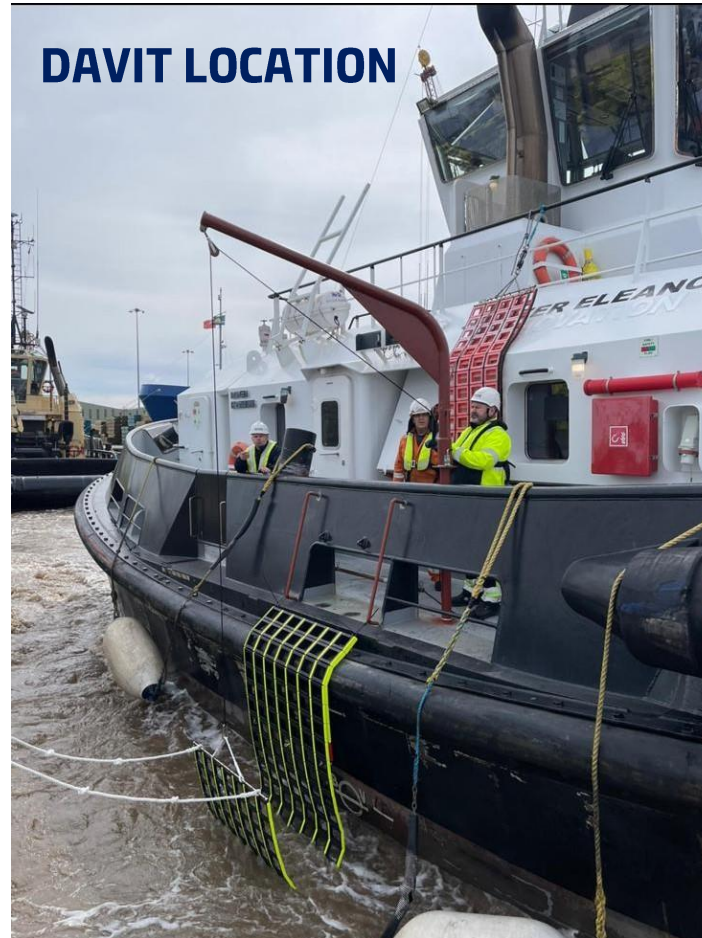


THE DAVIT DEVELOPMENT IN CONJUNCTION WITH DAMEN

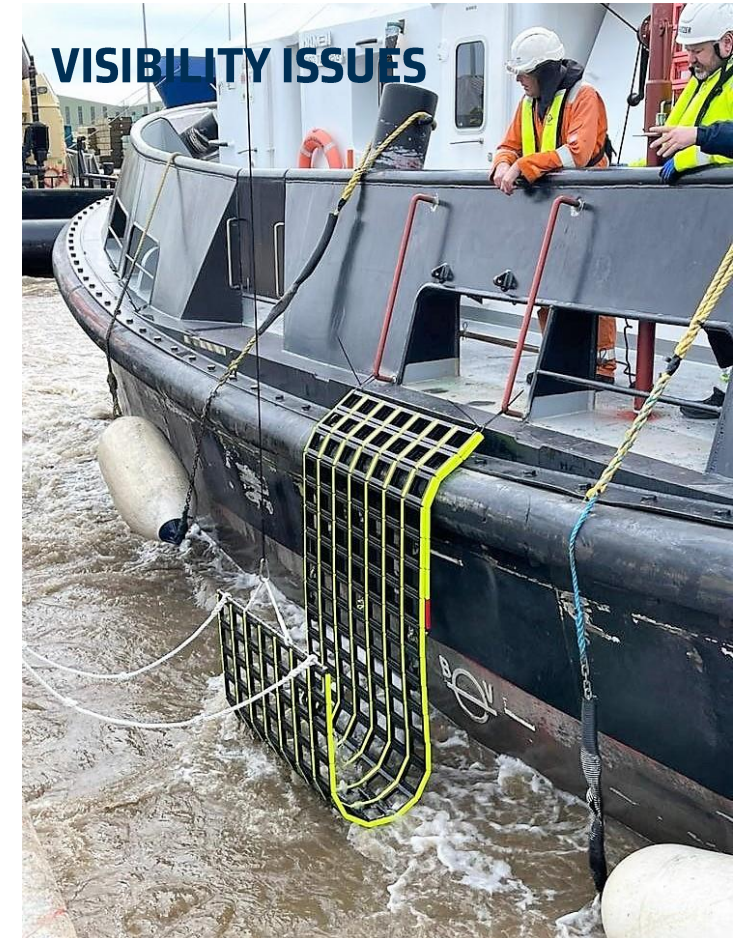
DAVIT DESIGN



DAVIT LOCATION



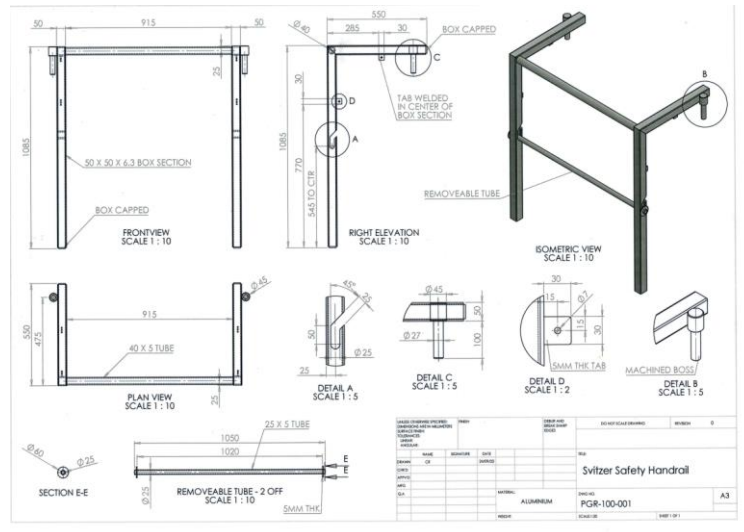
VISIBILITY ISSUES



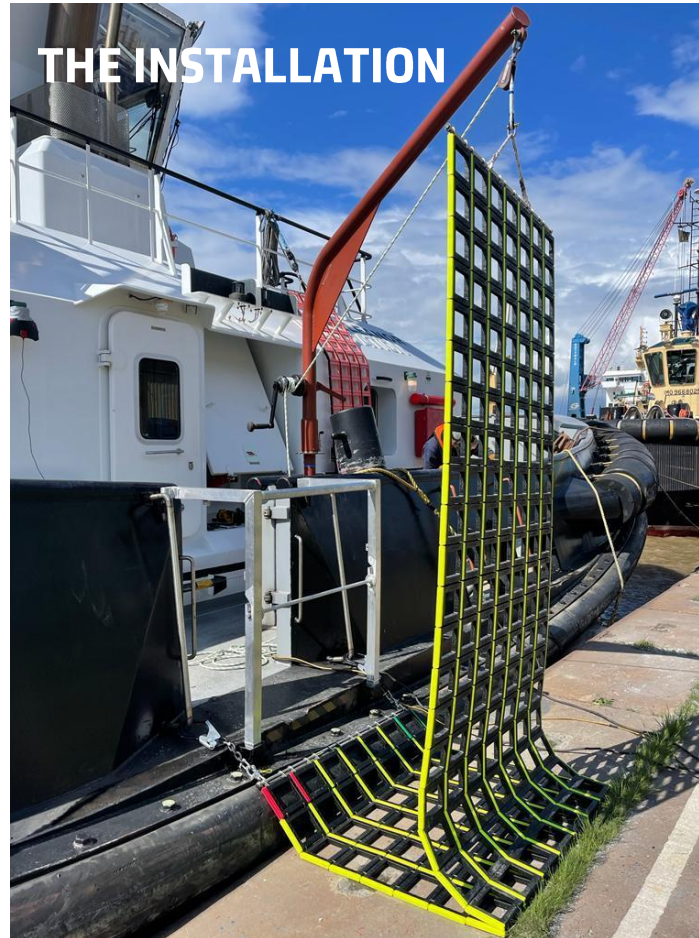
THE SOLUTION

THE OB RAIL AND DAVIT RELOCATION

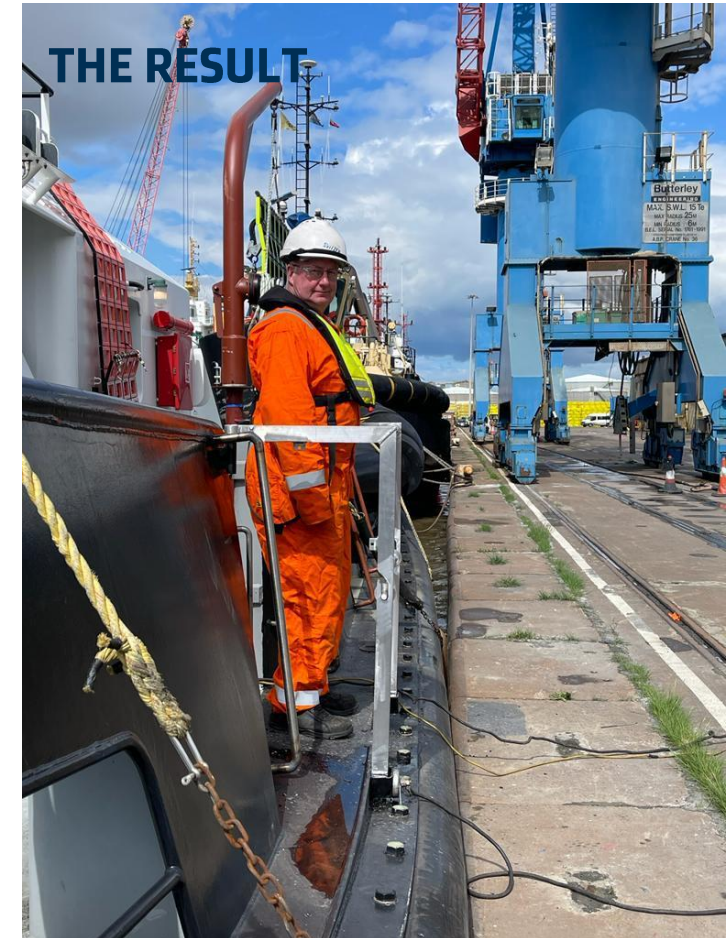
THE DESIGN



THE INSTALLATION



THE RESULT



THE OB RAIL



CONTACT DETAILS

OLIVER BURKE – TECHNICAL SUPERINTENDENT IMMINGHAM

OLIVER.BURKE@SVITZER.COM

07973945035



THANK YOU

SVITZER